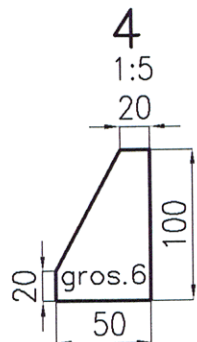
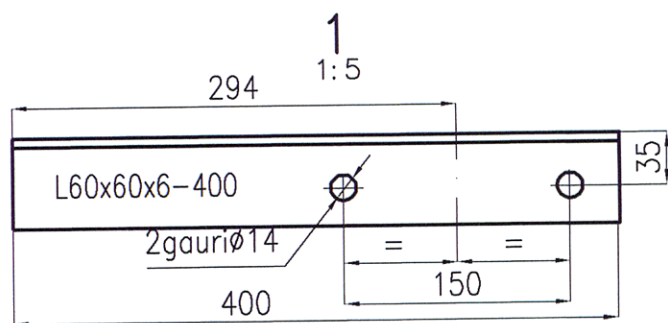
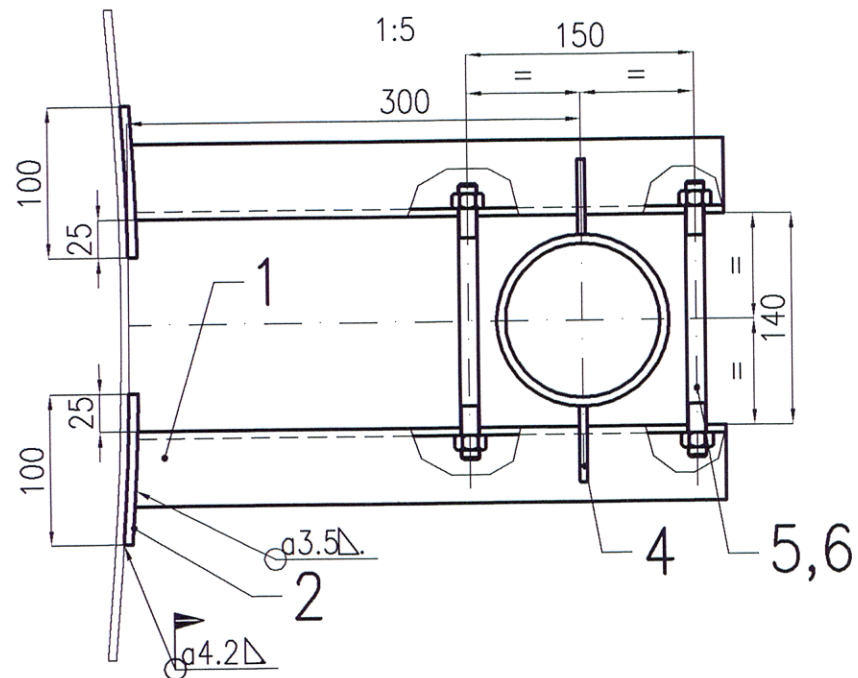
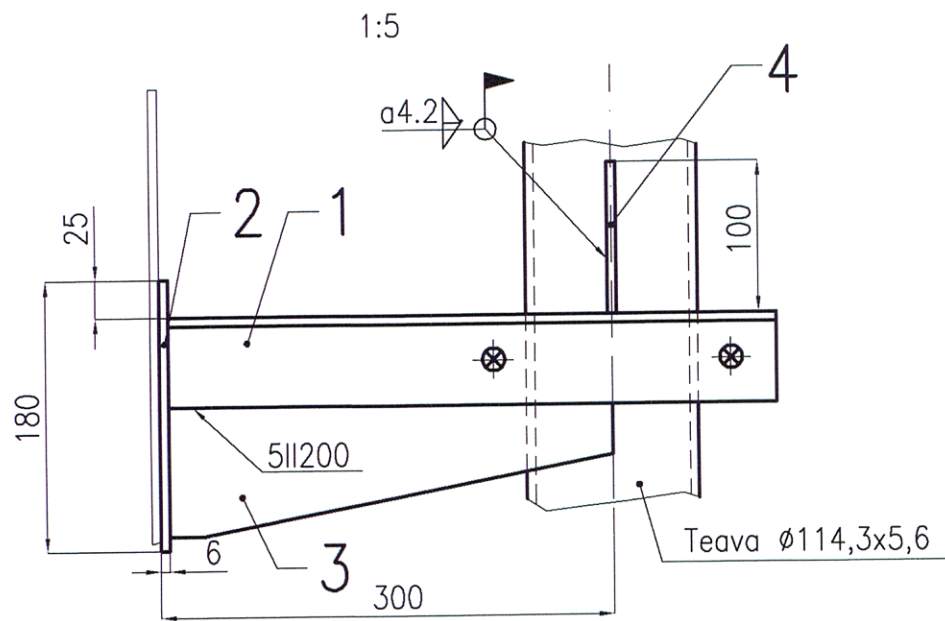
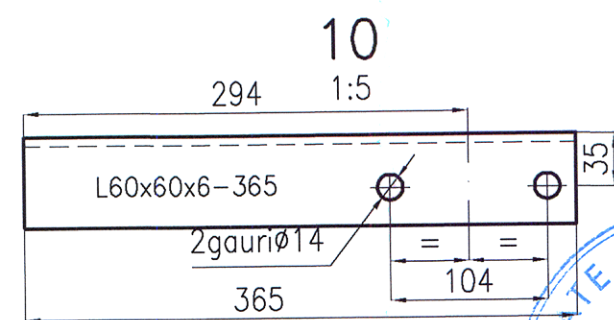
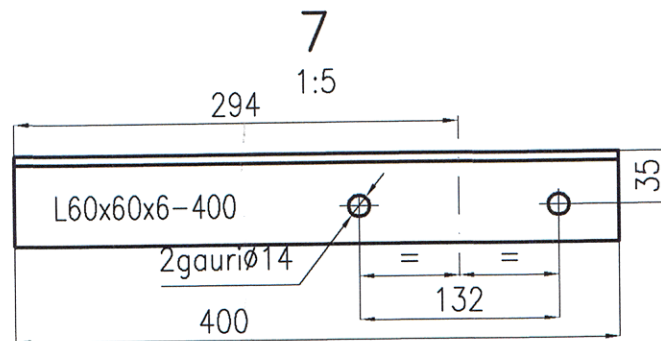
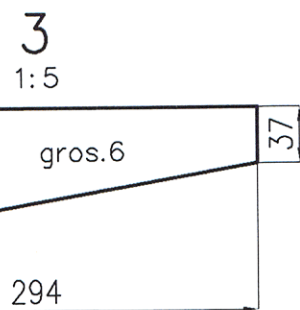
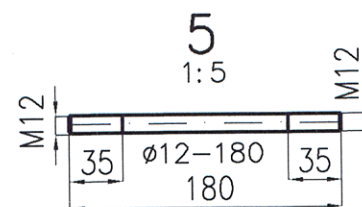
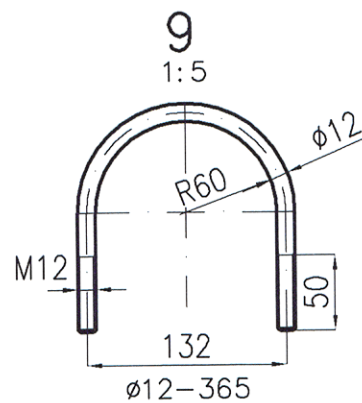
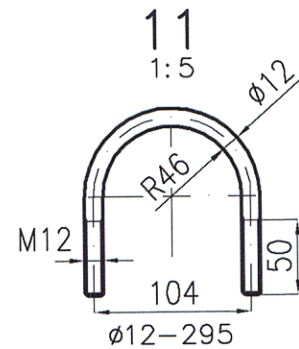
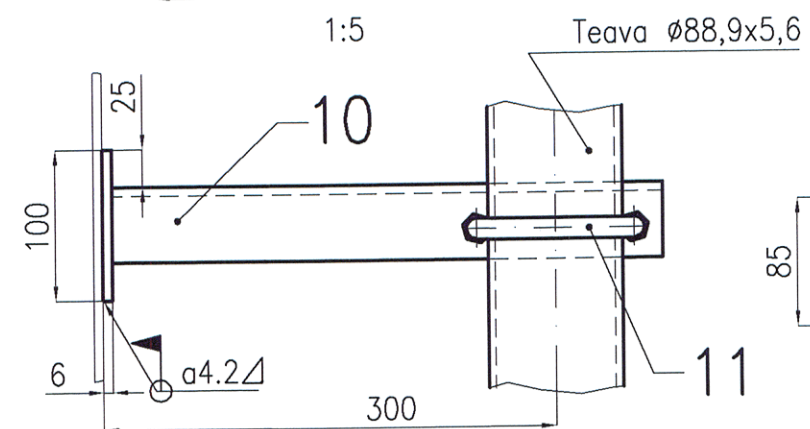
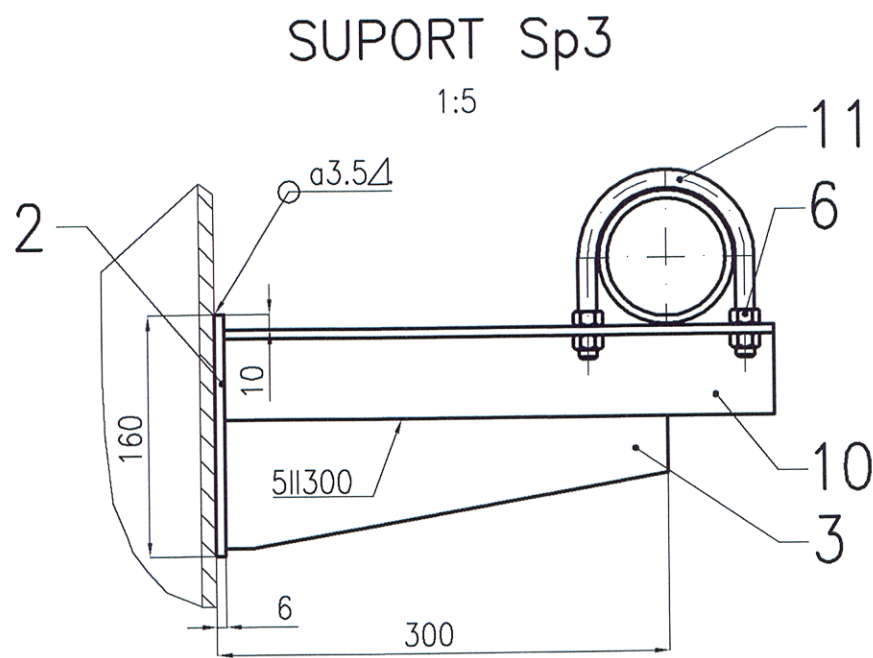
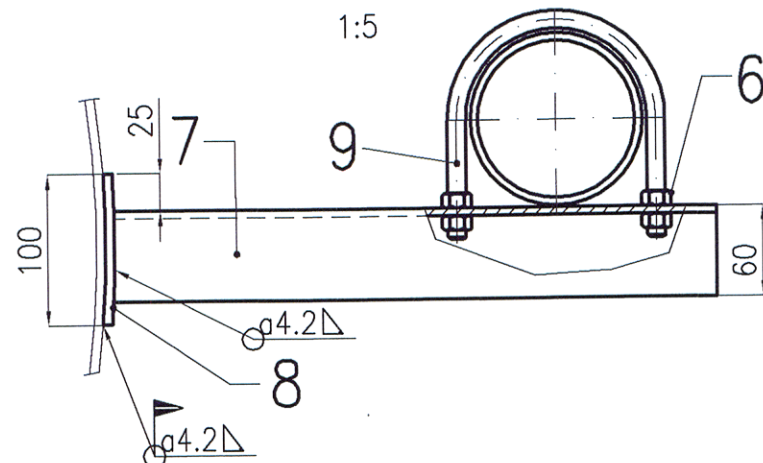
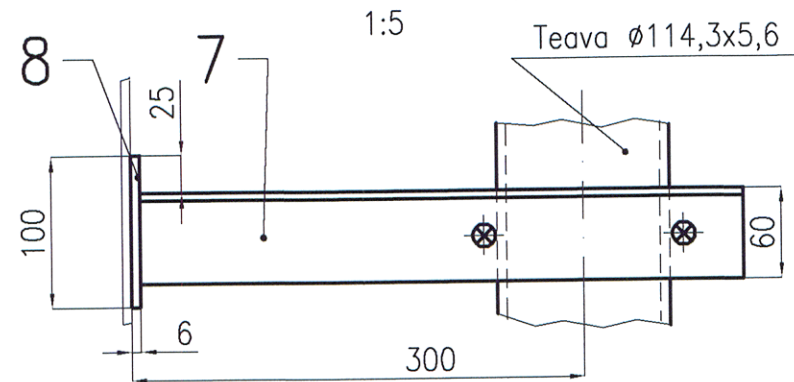


SUPORT Sp1



SUPORT Sp2



6	PIULITA M12sp.	SR EN ISO 4032:2013	4	gr.5		0.02
11	Bratara (Dn80)	SR EN 10025/2:2004	1	R-043	ø12-295	0.3
3	Nervura	SR EN 10025/2:2004	1	S235JR	6x85x294	0.9
2	Placa 1	SR EN 10025/2:2004	1	S235JR	6x100x180	0.8
10	Consola 3	SR EN 10025/2:2004	1	S235JR	L60x60x6-400	2.2
	Electrozi	SR EN ISO 2560:2010		E 35 2 B		0.1

SUPORT Sp3 -32buc Masa/buc 4.4 kg

6	Piulita M12	SR EN ISO 4032:2013	4	gr.5		0.02
9	Bratara (DN100)	SR EN 10025/2:2004	1	R-043	ø12-365	0.35
8	Placa 2	SR EN 10025/2:2004	1	S235JR	6x100x100	0.5
7	Consola 2	SR EN 10025/2:2004	1	S235JR	L60x60x6-400	2.2
	Electrozi	SR EN ISO 2560:2010		E 35 2 B		0.1

SUPORT Sp2 -3 buc Masa/buc 3.25 kg

6	Piulita M12	SR EN ISO 4032:2013	4	gr.5		0.02
5	Tirant M12	SR EN 10025/2:2004	2	S235JR	ø14-180	0.3
4	Guseu	SR EN 10025/2:2004	2	S235JR	6x50x100	0.3
3	Nervura	SR EN 10025/2:2004	2	S235JR	6x85x294	0.9
2	Placa 1	SR EN 10025/2:2004	2	S235JR	6x100x180	0.8
1	Consola 1	SR EN 10025/2:2004	2	S235JR	L60x60x6-400	2.2
	Electrozi	SR EN ISO 2560:2010		E 35 2 B		0.3

SUPORT Sp1 -2 buc Masa/buc 9.4 kg

Poz.	DENUMIREA	Nr.DESEN sau STAS		BUC.	MATERIAL	OBS.	Masa kg/buc
3				6			
2				5			
1				4			
Rev.	Descriere	Data	Semnat	Rev.	Descriere	Data	Semnat

Acest document este proprietatea S.C. ELLIS'92 S.R.L. si nu va fi comunicat fara autorizare							
Intocmit	Verificat	Aprobat	Beneficiar		Denumire proiect		
R. Mitu	A. Ionescu	A. Ionescu	CONPET S.A.		CONSTRUCTIE REZERVOR NOU PENTRU TITEL (V=2500 mc) STATIA DE POMPARE POIANA LACULUI		
92 ELLIS arhitectura proiectare inginerie consultanta tehnica				SUPORTURI CONDUCTE PSI RACIRE		Nr.:A643-PSI-02.01	
Material:				Masa:		Scara: 1:5	
						Index:A643-PSI-BD	
						Data:10.2018	
						Rev.0	
						Plansa: 1/1	